

WARM-ON

# PRODUCT CATALOGUE

**100%**  
QUALITY  
CONTROL

**30+**  
YEARS  
of experience

**+100 000**  
successful  
INSTALLATIONS

**>75 000**  
satisfied  
CUSTOMERS







# CONTENTS

About us.....	4
Electric underfloor heating mats WARMON.....	6
Technical data .....	9
Double-core heating mat with aluminium foil WARMON ALU .....	12
Heated carpet .....	14
Thermostats.....	16
TS100 .....	18
OKE25 .....	20
TS300.....	22
TS50 .....	26
TS25 .....	28
R7C-716.....	30
MCS 450.....	32
MCS 750 .....	36
TP 750 .....	38
AC3082H .....	40
Anti-freeze protection solutions .....	42
PipeMate & RoofMate Heating Cables .....	43
PipeMate .....	44
RoofMate .....	45
Water leak detection & protection systems.....	48
Stahlmann AquaPro.....	49
Stahlmann AquaPro WiFi Sensor .....	50
Stahlmann Smart Wi-Fi Ball Valve .....	51
Stahlmann AquaPro Pro System.....	52

# ABOUT US

Since 2015, **warm-on GmbH** has been at the forefront of delivering world-class home comfort solutions across Europe. What began as a focused mission to bring safe and efficient underfloor heating into homes has grown into a trusted brand recognized for its commitment to innovation, reliability, and customer satisfaction.

With over 100,000 heating mats sold and more than 75,000 satisfied customers

warm-on has firmly established itself as a leader in the European market. Our products are widely available through major platforms such as Amazon, Leroy Merlin, Mano-Mano, BOL.be, and Direct Industry, reflecting the strong demand and confidence that both consumers and professionals place in our brand. Today, warm-on solutions can be found in over **60 countries**, integrated into homes, offices, and industrial facilities.

At the heart of our success lies our dedication to quality.

We proudly operate our own ISO 9001-certified manufacturing facility, giving us complete control over production and ensuring that every product meets the highest standards of safety, performance, and durability.

# 100%

## QUALITY CONTROL,

is the commitment that allows us to offer one of the industry's most robust guarantees —

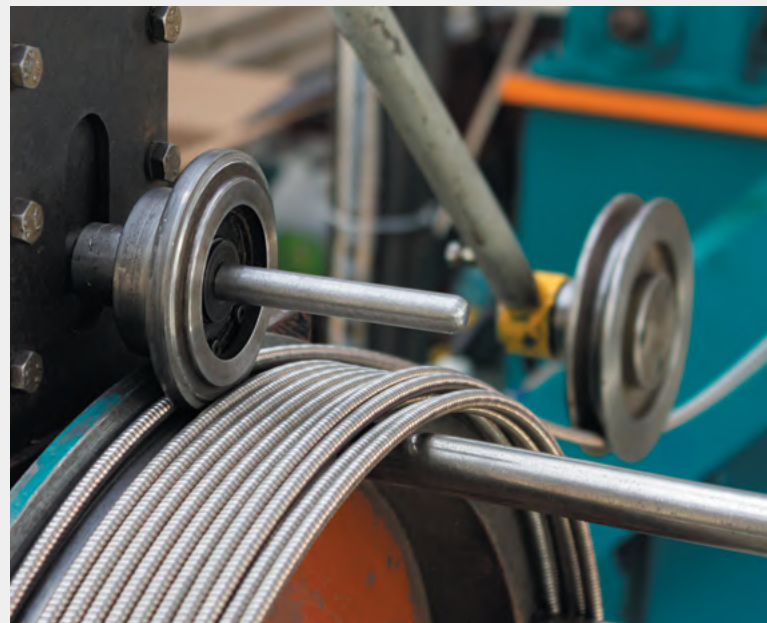
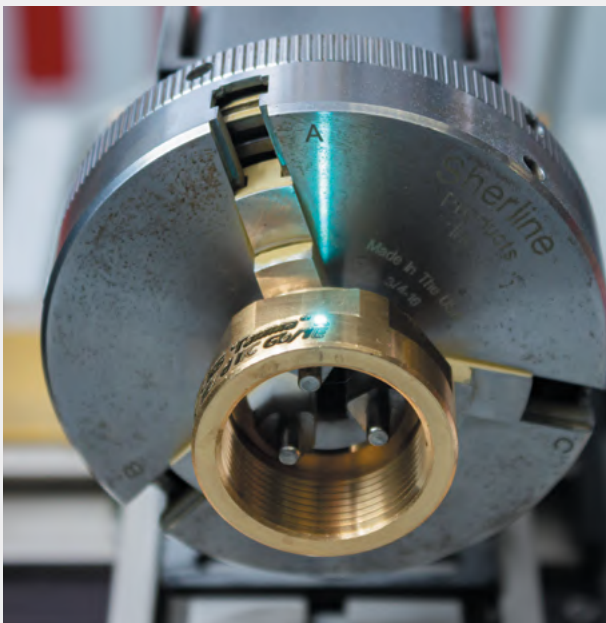
## A 30-YEAR WARRANTY

on our underfloor heating systems.

But warm-on is more than just heating. Our portfolio now includes Stahlmann corrugated stainless steel pipes with advanced leakage protection systems, and the OneKeyElectro range of designer switches, sockets, and thermostats. Each product combines functionality, efficiency, and modern design to meet the demands of both residential and commercial spaces.

Driven by our core values — safety, comfort, energy efficiency, and sustainable innovation—we continue to develop solutions that align with German design principles and strict European standards. As we grow, our mission remains the same: to deliver high-quality, reliable products that make homes and workplaces safer, warmer, and smarter.





# WARMON

## Electric Underfloor Heating Mats



ENERGY  
SAVING

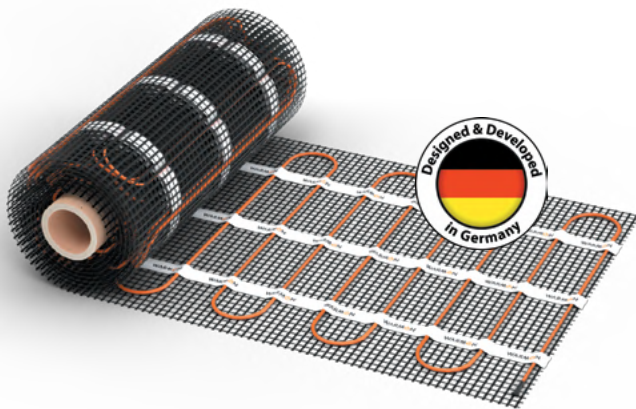


ZERO HARMFUL  
SUBSTANCE  
EMISSIONS



# WARMON

## Electric Underfloor Heating Mats



Underfloor heating is a cost-efficient and highly practical way to heat the beautiful but cold flooring of your home. It provides thermal comfort and even heat distribution throughout the room. Installation costs are low and installation is quick and simple. The underfloor heating brings warmth and comfort to your home.

### Premium comfort

A perfect way to create comfortable thermal conditions in rooms is to use underfloor heating. The heat is evenly distributed from underneath, allowing you to create the optimum thermal climate in your room. The underfloor heating can be used as a central or supplementary heating system.

### Environmentally friendly heating

Electric underfloor heating is an environmentally friendly way to heat your home and create a cosy and warm environment. Imagine consistently dry, comfortably warm floors without any air or dust circulation. This system helps maintain balanced humidity levels, reduces the accumulation of cold air near the floor, and minimizes the drying effect often caused by conventional heating. Underfloor heating also promotes a healthier indoor climate excellent for children's play, pets' wellbeing and the whole family's enjoyment.

### Aesthetic design

Compared to traditional heating systems, underfloor heating is completely invisible. It is built into the floor structure, giving you space and design freedom. Say goodbye to bulky radiators and visible heating units — enjoy the freedom to shape your space without compromise.

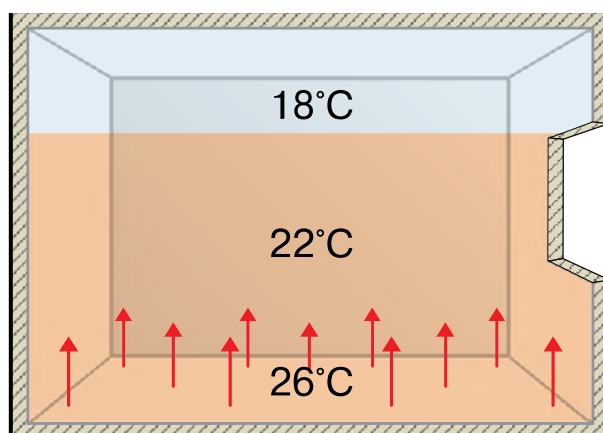
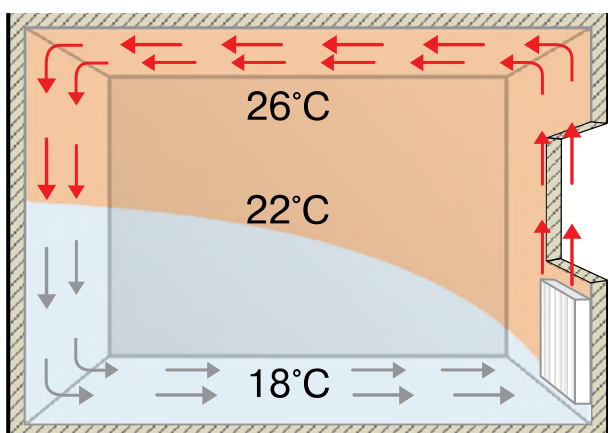
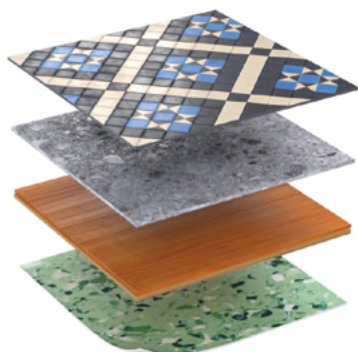
### Easy installation

Underfloor heating systems are easy to install. They are suitable for all types of rooms: bedrooms, bathrooms, children's rooms, offices, kitchens, etc. This heating system is compatible with a wide range of flooring types. Underfloor heating is best suited to 'cold' floors such as ceramic tiles, marble and granite.



## FOR FLOORING TYPES:

- Ceramic tile
- Porcelain stoneware
- Laminate
- Linoleum
- Carpet



### Low costs

Underfloor heating systems allow you to reduce your heating costs. Installing the heating system under the floor provides an increased surface area for heat emission. The close proximity to the floor ensures fast and optimal heating. Meanwhile, a smart electronic thermostat keeps the room comfortable by automatically switching the heating on and off as you wish. When you leave, the smart appliance is in low-power mode. When you return, the house is warm enough. Underfloor heating only works when you need it. This can significantly reduce your heating costs.

### Long-lasting performance. Safety. Warranties.

The durability of underfloor heating systems is ensured by the highest quality components and innovative technologies. Warm floors are manufactured in full compliance with European quality standards and are completely safe. As a manufacturer we offer the highest factory guarantees for our products.

## PRODUCT RANGE

Product type	Linear power output, W/m	Power output, W/m <sup>2</sup>	Double-core cable	Protection class	Main heating	Additional heating	Maximum temperature, °C
Heating mat WARMON LIGHT (100)	9-11	100	+	IP67		+	80
Heating mat WARMON CLASSIC (150)	12	150	+	IP67	+	+	80
Heating mat WARMON ULTRA (200)	13-16	200	+	IP67	+	+	80



## DESCRIPTION

### Application

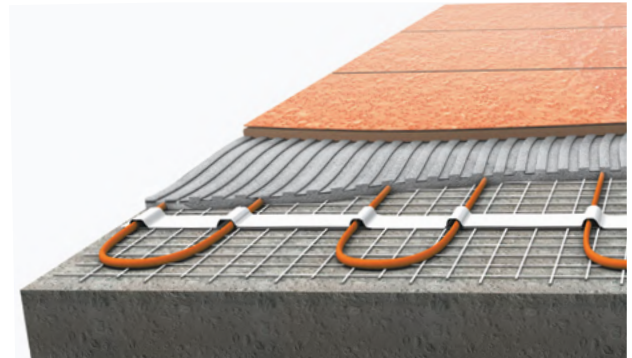
The WARMON heating mat is used for comfortable underfloor heating. The mat can be easily laid in a thin layer of tile adhesive (8-10 mm) under any floor covering: tiles, marble, carpet, etc. Suitable for all types of rooms, it can be easily installed both on a new surface and on an existing floor in the case of renovation work, especially when it is important to keep the thickness of the floor structure small.

### Construction

The WARMON double-core heating mat consists of a shielded double-core cable mounted on a fibre mesh. The heating mat is equipped with a cold lead, a reliable coupling and an end termination. The cable is fixed to the self-adhesive mesh - there is no need to adjust the wire spacing or fix the cable to the floor surface. As there is only one connection wire, the double-core mat is easy to install, reducing installation costs.

## APPLICATION

Application		Installation	
Main heating	<input checked="" type="checkbox"/>	Mortar	<input type="checkbox"/>
Additional heating	<input checked="" type="checkbox"/>	Tile adhesive layer	<input checked="" type="checkbox"/>

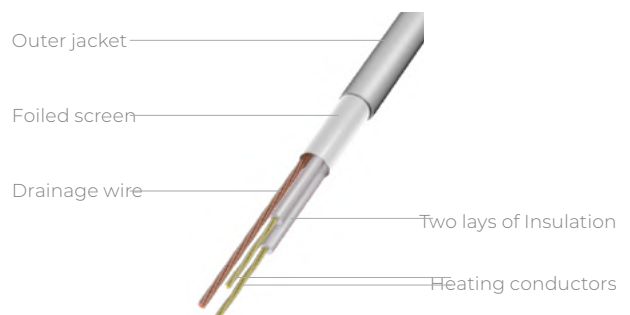


## FEATURES

- The best solution for rooms with low ceilings
- Cost-effective and energy-saving system
- Wide power output range
- Proven long lasting performance
- Self-adhesive mat
- Easy installation

## CABLE DESIGN

Double-core heating cable WARMON



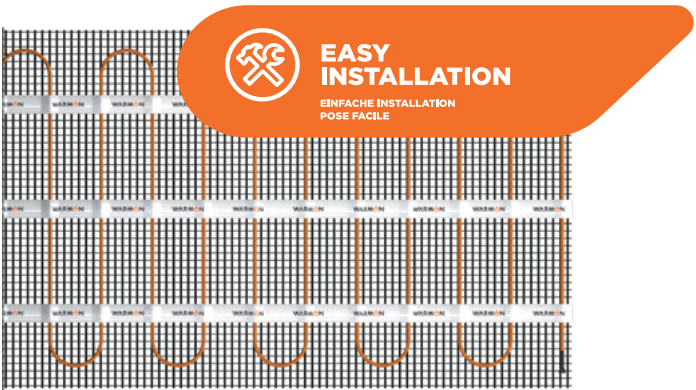
## TECHNICAL DATA

Rated voltage	230 VAC
Power	100W, 150W, 200W
Maximum operation temperature	90 °C
Minimum operation temperature	-10 °C
Minimum storage temperature	-20 °C
Minimum installation temperature	-10 °C
Installation width	0.5 m
Cable diameter	approx. 3.5-5.0 mm
Cold lead length	up to 3 m <sup>2</sup> (inclusive) -3 m, over 3 m <sup>2</sup> - 4 m
Cable color	orange
Mesh color	black

INSTALLATION

A thermostat with a suitable temperature sensor is required to install the heating mat. The temperature sensor should be placed in a corrugated pipe and embedded in the floor in the middle of a cable loop. The thermostat should be mounted on the wall in the most convenient location for you. Applicable standards, regulations and data sheets, as well as instructions and manuals, must be observed! Detailed installation instructions can be found in the installation manual.

DELIVERY KIT



Heating mat  
Warm-on

- 1. Temperature sensor
- 2. Closing plug
- 3. Plastic corrugated pipe
- 4. User manual

JOINT PRODUCTS

Thermostats (pages 13-25)

ORDERING INFORMATION

Heating mat WARMON CLASSIC (150)-150-1.00

Product reference: type of the heating mat	
Power, W	
Area, m <sup>2</sup>	

APPROVALS

The product meets all necessary requirements



## TECHNICAL DATA

WARMON CLASSIC LIGHT 100	κ>λ, m	$\frac{\bar{\lambda}}{\lambda}$ , m	m²	W	Ω @ +20°C (-5%, +10%)		A
WARMON CLASSIC LIGHT (100)-100-1,00	0.5	2	1,0	100	516,04	490,23 - 567,64	0,45
WARMON CLASSIC LIGHT (100)-150-1,50	0.5	3	1,5	150	344,81	327,57 - 379,29	0,67
WARMON CLASSIC LIGHT (100)-200-2,00	0.5	4	2,0	200	256,41	243,58 - 282,05	0,90
WARMON CLASSIC LIGHT (100)-250-2,50	0.5	5	2,5	250	199,64	189,66 - 219,61	1,10
WARMON CLASSIC LIGHT (100)-300-3,00	0.5	6	3,0	300	158,92	150,98 - 174,82	1,38
WARMON CLASSIC LIGHT (100)-350-3,50	0.5	7	3,5	350	141,45	134,37 - 155,59	1,52
WARMON CLASSIC LIGHT (100)-400-4,00	0.5	8	4,0	400	122,19	116,08 - 134,41	1,76
WARMON CLASSIC LIGHT (100)-500-5,00	0.5	10	5,0	500	94,03	89,33 - 103,44	2,29
WARMON CLASSIC LIGHT (100)-600-6,00	0.5	12	6,0	600	79,82	75,83 - 87,80	2,74
WARMON CLASSIC LIGHT (100)-700-7,00	0.5	14	7,0	700	71,52	67,94 - 78,67	3,06
WARMON CLASSIC LIGHT (100)-800-8,00	0.5	16	8,0	800	65,79	62,50 - 72,37	3,33
WARMON CLASSIC LIGHT (100)-1000-10,00	0.5	20	10,0	1000	43,50	41,33 - 47,85	4,60
WARMON CLASSIC LIGHT (100)-1200-12,00	0.5	24	12,0	1200	36,39	34,57 - 40,03	5,50
WARMON CLASSIC LIGHT (100)-1400-14,00	0.5	28	14,0	1400	30,98	29,44 - 34,08	6,45

WARMON CLASSIC 150 W/m²	κ>λ, m	$\frac{\bar{\lambda}}{\lambda}$ , m	m²	W	Ω @ +20°C	(-5%, +10%)	A
WARMON CLASSIC (150)-150-1,00	0.5	2	1,0	150	369,44	350,96 - 406,38	0,62
WARMON CLASSIC (150)-225-1,50	0.5	3	1,5	225	226,53	215,21 - 249,19	1,02
WARMON CLASSIC (150)-300-2,00	0.5	4	2,0	300	167,56	159,18 - 184,31	1,31
WARMON CLASSIC (150)-375-2,50	0.5	5	2,5	375	130,00	123,50 - 143,00	1,68
WARMON CLASSIC (150)-450-3,00	0.5	6	3,0	450	113,56	107,88 - 124,91	1,89
WARMON CLASSIC (150)-525-3,50	0.5	7	3,5	525	92,97	88,32 - 102,27	2,31
WARMON CLASSIC (150)-600-4,00	0.5	8	4,0	600	83,67	79,49 - 92,04	2,57
WARMON CLASSIC (150)-750-5,00	0.5	10	5,0	750	64,99	61,74 - 71,49	3,37
WARMON CLASSIC (150)-900-6,00	0.5	12	6,0	900	53,97	51,27 - 59,37	4,06
WARMON CLASSIC (150)-1050-7,00	0.5	14	7,0	1050	46,18	43,87 - 50,80	4,74
WARMON CLASSIC (150)-1200-8,00	0.5	16	8,0	1200	36,53	34,70 - 40,18	5,48
WARMON CLASSIC (150)-1500-10,00	0.5	20	10,0	1500	29,82	28,33 - 32,80	6,71
WARMON CLASSIC (150)-1800-12,00	0.5	24	12,0	1800	26,06	24,76 - 28,67	7,67
WARMON CLASSIC (150)-2100-14,00	0.5	28	14,0	2100	22,49	21,36 - 24,73	8,89

WARMON CLASSIC 200 W/m <sup>2</sup>	κ>λ, m	$\frac{\bar{\lambda}}{\lambda}$ , m	m <sup>2</sup>	W	Ω @ +20°C	(-5%, +10%)	A
WARMON ULTRA (200)-200-1,00	0,5	2	1,0	200	264,35	251,13 - 290,79	0,87
WARMON ULTRA (200)-300-1,50	0,5	3	1,5	300	156,86	149,02 - 172,55	1,40
WARMON ULTRA (200)-400-2,00	0,5	4	2,0	400	115,55	109,77 - 127,10	1,86
WARMON ULTRA (200)-500-2,50	0,5	5	2,5	500	95,63	90,84 - 105,19	2,25
WARMON ULTRA (200)-600-3,00	0,5	6	3,0	600	80,68	76,65 - 88,75	2,66
WARMON ULTRA (200)-700-3,50	0,5	7	3,5	700	68,65	65,22 - 75,52	3,19
WARMON ULTRA (200)-800-4,00	0,5	8	4,0	800	61,57	58,49 - 67,73	3,56
WARMON ULTRA (200)-1000-5,00	0,5	10	5,0	1000	49,35	46,88 - 54,28	4,44
WARMON ULTRA (200)-1200-6,00	0,5	12	6,0	1200	41,62	39,54 - 45,78	5,26
WARMON ULTRA (200)-1400-7,00	0,5	14	7,0	1400	32,79	31,15 - 36,07	6,10
WARMON ULTRA (200)-1600-8,00	0,5	16	8,0	1600	28,49	27,07 - 31,34	7,02
WARMON ULTRA (200)-2000-10,00	0,5	20	10,0	2000	22,80	21,66 - 25,08	8,77
WARMON ULTRA (200)-2400-12,00	0,5	24	12,0	2400	19,10	18,14 - 21,01	10,47
WARMON ULTRA (200)-2800-14,00	0,5	28	14,0	2800	16,38	15,56 - 18,01	12,21



# WARMON ALU

## Double-core heating mat with aluminium foil

**Easy installation in 10 minutes!**

### UNIQUE TECHNOLOGY

Warmon Alu is a thin underfloor heating system based on an ultra compact heating cable laid between aluminium foil layers. It can be used for comfortable floor heating without the need for major reconstruction works, installed directly under your floor coating and provides comfortable warmth in rooms of any type.

### ADVANTAGES

- **Only 1.5 mm thick**
- Does not alter the floor level
- Quick installation without insulation and adhesive in 10 minutes
- Safe solution for children's rooms
- Superstrong aluminium-PET base
- No electric field
- Water-protected
- **30-year warranty**

### CABLE DESIGN

Double-core heating cable WARMON ALU



1. Multiwire heating cores
2. Insulating thermoplastic elastomer



**30 YEAR WARRANTY**



1. Insulated heating cable between two aluminium foil layers glued together
2. Coupler with groundwire
3. Installation wire

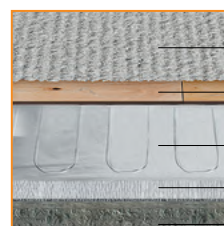
### INSTALLATION

#### Under laminate / parquet



Laminate/parquet strips  
Alu heating mat  
Base plate  
Floor base

#### Under linoleum / carpet



Linoleum/carpet  
MDF/plywood  
Alumia heating mat  
Base plate  
Floor base

## CABLE SPECIFICATIONS

Supply voltage	~220 V
Power	150 W/m <sup>2</sup>
Maximum operation temperature	+90 °C
Minimum installation temperature	-10 °C
Minimum storage temperature	-20 °C
Cable diameter	1,18–1,62 mm

## PRODUCT REFERENCES

WARMON ALU 150 W/m <sup>2</sup>	l < > l, m	$\frac{\widehat{\Delta}}{\Delta}$ , m	m <sup>2</sup>	W	$\Omega$ @ +20°C (-5%, +10%)		A
WARMON ALU (150)-150-1,00	0,5	2	1,0	150	320,78	304,74 - 352,85	0,72
WARMON ALU (150)-225-1,50	0,5	3	1,5	225	240,69	228,66 - 264,76	0,96
WARMON ALU (150)-300-2,00	0,5	4	2,0	300	171,12	162,57 - 188,24	1,28
WARMON ALU (150)-375-2,50	0,5	5	2,5	375	131,49	124,91 - 144,63	1,63
WARMON ALU (150)-450-3,00	0,5	6	3,0	450	108,91	103,46 - 119,80	1,97
WARMON ALU (150)-525-3,50	0,5	7	3,5	525	95,63	90,84 - 105,19	2,25
WARMON ALU (150)-600-4,00	0,5	8	4,0	600	84,47	80,25 - 92,92	2,54
WARMON ALU (150)-750-5,00	0,5	10	5,0	750	68,41	64,99 - 75,26	3,20
WARMON ALU (150)-900-6,00	0,5	12	6,0	900	57,77	54,88 - 63,55	3,79
WARMON ALU (150)-1050-7,00	0,5	14	7,0	1050	43,32	41,16 - 47,65	4,62
WARMON ALU (150)-1200-8,00	0,5	16	8,0	1200	38,82	36,88 - 42,70	5,15
WARMON ALU (150)-1500-10,00	0,5	20	10,0	1500	31,41	29,84 - 34,55	6,37
WARMON ALU (150)-1800-12,00	0,5	24	12,0	1800	25,95	24,65 - 28,54	7,71
WARMON ALU (150)-2250-15,00	0,5	30	15,0	2250	20,78	19,74 - 22,86	9,62

## APPROVALS

The product meets all necessary requirements



## ORDERING INFORMATION

Heating mat WARMON ALU-(150)-225-1,50

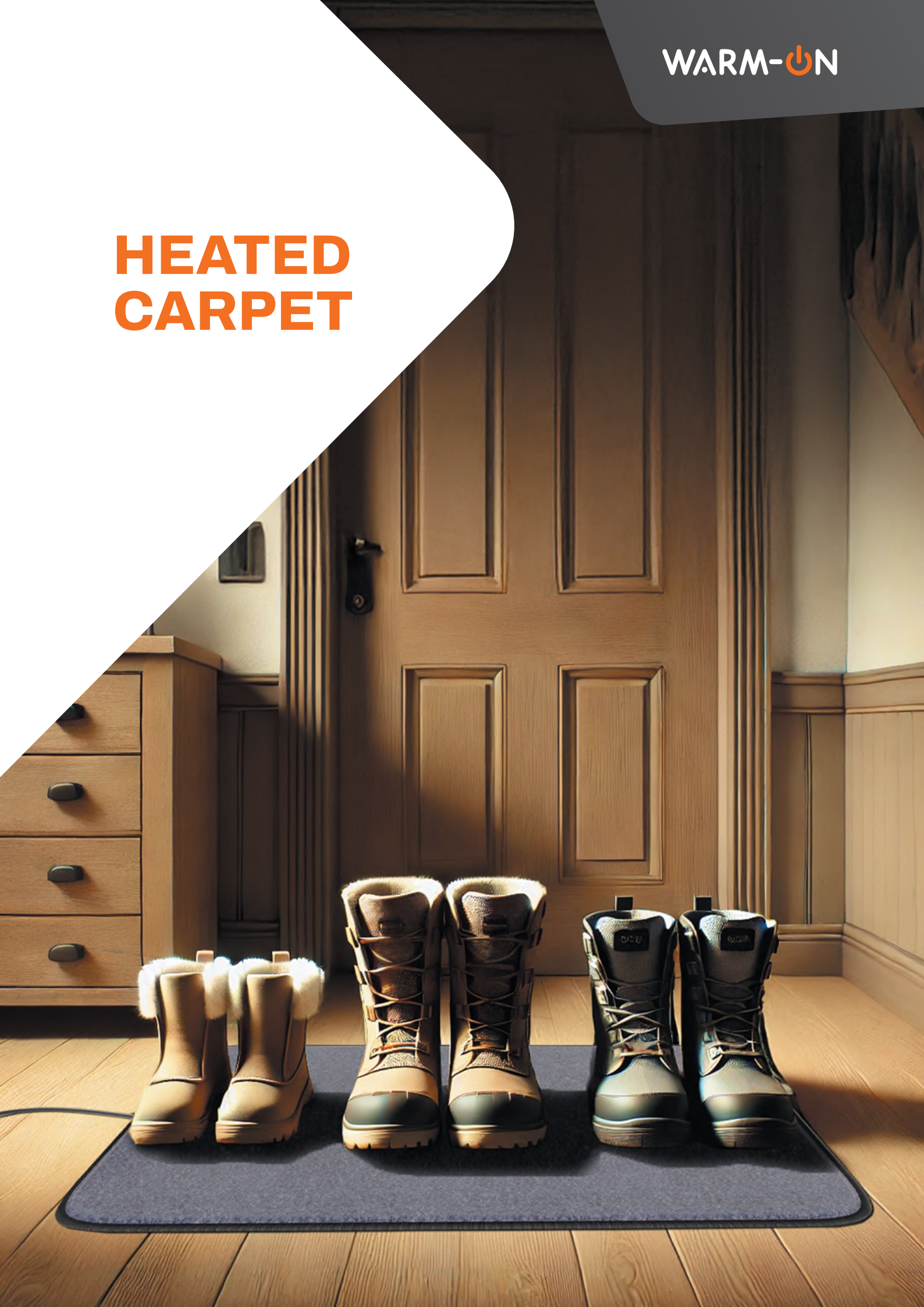
Product reference: type of the heating mat

Power, W

Area, m<sup>2</sup>

Power per square meter, W/ m<sup>2</sup>

# HEATED CARPET







DESCRIPTION

The Heated Carpet may be used for:

Shoe cleaning at the entrance to rooms (offices, halls, lobbies, kitchens, etc.). Heated carpets increase protection against dust and dirt.

Drying wet shoes. The result is that your shoes are always dry and well cared for.

Warm feet. Heated carpets keep your feet comfortable and warm.

The Heated Carpet is designed for use on floors only. We recommend it for use on the following types of floor: ceramic or stone tiles, laminate and linoleum.

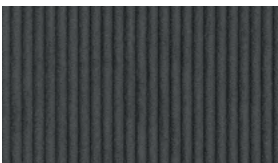
INSTALLATION

No additional preparations necessary.

PRODUCT REFERENCES

Heated carpet		
Type	Dimensions, cm	Rated power, W
Heated carpet 80 x 50	80×50	70

COLOR EXAMPLES



Grey

FEATURES

- Fast and even heating
- Easy to clean of dust and dirt
- Ideal for any location: entrance hall, lounge, living room, study, office
- Safe and durable
- Easy to use and maintain

DESIGN

The power supply cable is fitted with a grounded plug



TECHNICAL DATA

Rated voltage	230 VAC
Operation temperature	35–40 °C
Power cable	2.0 m
Protection class	I
IP rating	IP67

ORDERING INFORMATION

Heated carpet                      Heated carpet 80×50

Product reference: \_\_\_\_\_

Dimensions, cm

APPROVALS

The product meets all necessary requirements



# THERMOSTATS







# TS100 Touch Thermostat

## WIFI Touch white/black



The warm-on TS100 Touch Thermostat is designed for precise and efficient temperature control, ensuring optimal comfort for underfloor heating systems. With a sleek touchscreen interface, advanced dual-sensor technology, and frame compatibility with top brands, this thermostat is the perfect choice for modern homes.

The warm-on TS100 Touch Thermostat delivers style, intelligence, and energy-efficient heating control – ideal for modern smart homes.

### TECHNICAL DATA

Color	White/Black
Power Supply	90-240V AC, 50/60Hz
Maximum Load	16A
Temperature Range	1°C – 70°C
Default Temperature Range	5°C – 35°C
Accuracy	±0.5°C
Sensor Type	NTC (10kΩ)
Display Type	Touchscreen
Dimensions	55x55mm (without frame), 82x82mm (with frame)
Certifications	Complies with European Directives (EMC & Safety Standards)

## FEATURES

- Touchscreen Control – Intuitive operation with a sleek display
- Dual Sensor Technology – Built-in air and external floor sensors for accurate temperature management
- Temperature Precision – Maintains set temperature with  $\pm 0.5^{\circ}\text{C}$  accuracy
- Flexible Programming – Supports 5+2, 6+1, and 7-day scheduling options
- Child Lock Function – Prevents accidental setting changes
- Memory Function – Retains settings during power outages
- Holiday Mode – Allows pre-programming of temperatures for up to 30 days
- Frame Compatibility – Designed to fit frames from Schneider, Legrand, ABB, Danfoss, Berker, ELKO wiring accessories

## ADDITIONAL FEATURES

- Wi-Fi Connectivity – Control your thermostat remotely via the Smart Life app
- Voice Assistant Integration – Works with Amazon Alexa & Google Assistant for hands-free control.

## SMART CONTROL & EASY INSTALLATION

- TS100 WiFi model allows remote access and voice commands for a fully connected home
- Quick and hassle-free installation, compatible with standard electrical boxes

## WARRANTY & RELIABILITY

- 2 years
- Built with high-quality materials for long-term durability



# Thermostat

# OneKeyElectro 25

## WIFI Touch



The OneKeyElectro 25 WIFI Touch is an advanced thermostat designed for precise control of underfloor heating systems, combining modern aesthetics with cutting-edge technology. This in-house developed model seamlessly integrates with the OneKeyElectro wiring accessories line, ensuring a stylish and unified look in any interior.

The OneKeyElectro 25 WIFI Touch is the perfect combination of elegant design, intelligent features, and energy-efficient heating control – ideal for modern homes and smart environments.

### TECHNICAL DATA

Brand	ONEKEYELECTRO
Power Supply	230V AC
Maximum Load	16A (3.68 kW)
Power Consumption	Max. 5W
Temperature Range	+5°C to +40°C
Temperature Control Limits	+5°C to +45°C
Display Type	Monochrome Touchscreen
IP Protection Class	IP21 (for indoor use)
Sensor Type	NTC 6.8 kOhm, 3m lead length
Dimensions	80 × 80 × 42 mm
Weight	150g
Certification	Complies with European Directives 2014/30/EU (EMC) & 2012/19/EU



## FEATURES

- Wi-Fi Connectivity – Remote control via the Tuya Smart Life app
- Touchscreen Display – Intuitive monochrome interface for effortless adjustments
- 24/7 Programmable – Set customized heating schedules
- One-Touch Favorite Temperature – Instant access to your preferred comfort level
- Dual Temperature Sensors – Built-in room and external floor sensors for precise heating control
- Adaptive Heating Logic – Optimizes energy consumption for efficiency and comfort

## EASY INSTALLATION & SMART CONTROL

- Quick installation into standard electrical boxes
- Supports EZ Config & Access Point Wi-Fi Setup
- Remote access and scheduling via Tuya Smart Life app

## ADDITIONAL FEATURES

- Compatible with Multiple Heating Systems:
  - Heating Mats
  - Film Heaters
  - Heating Cables
  - Water Underfloor Heating (via 230V thermal head control)
- Compatible with OneKeyElectro Wiring Accessories – Perfect fit with Florence and Garda frames
- White Florence Plastic Frame Included

## WARRANTY & RELIABILITY

- 2 years
- 100% Quality Control & Compliance with European Standards



# TS300 WiFi Thermostat

## Touchscreen Smart white/black



The TS300 WiFi is a high-end smart thermostat for electric and hydronic underfloor heating systems. Featuring a large, full-color 3.5" touchscreen, it allows remote control via the Smart Life / Tuya app and supports advanced programming with up to 6 time periods per day.

### TECHNICAL DATA

Color	White/Black
Power Supply	90-240VAC 50/60Hz
Maximum Load	16A
Temperature Range	1°C – 70°C
Default Temperature Range	5°C – 35°C
Accuracy	±0.5°C
Sensor Type	NTC(10kΩ)±1%
Insulating Condition	Suitable for normal environment
Programming Cycle	7-day weekly programming
Contact Capacity:	3A (WW); 16A (WE)
Display Type	Touchscreen
Output	Relay switch
Installation	Flush mount (in-wall)
Dimensions	86×86×27 mm glass panel
Certifications	Complies with European Directives (EMC & Safety Standards)

## FEATURES

- Remote control via Smart Life / Tuya app (iOS/Android)
- Weekly programmable schedule (5+2, 6+1, 7-day)
- Built-in + external floor sensors included
- Child lock, holiday mode, and open window detection
- $\pm 0.5^{\circ}\text{C}$  accuracy |  $5\text{--}35^{\circ}\text{C}$  control range
- Stylish flush-mount glass panel (86x86mm)
- Power supply: 230V | Max load: 16A

## WARRANTY

- 2 years
- Compliant with





# TS300 Thermostat

## Touchscreen Digital white/black



Designed for users who prefer offline control, the TS300 offers elegant touchscreen operation and full 7-day programming for both electric and water-based underfloor heating systems.

### TECHNICAL DATA

Color	White/Black
Power Supply	90-240VAC 50/60Hz
Maximum Load	16A
Temperature Range	1°C – 70°C
Default Temperature Range	5°C – 35°C
Accuracy	±0.5°C
Sensor Type	NTC(10kΩ)±1%
Display Type	Touchscreen
Insulating Condition	Suitable for normal environment
Programming Cycle	7-day weekly programming
Contact Capacity:	3A (WW); 16A (WE)
Output	Relay switch
Installation	Flush mount (in-wall)
Dimensions	86×86×27 mm glass panel
Certifications	Complies with European Directives (EMC & Safety Standards)

## FEATURES

- 3.5" full touch display with intuitive UI
- 6 programmable periods per day (weekly schedule)
- Supports electric and hydronic systems
- Built-in and external sensors included
- Holiday mode, child lock, open window detection
- Flush wall mount | 86x86 mm glass panel
- Power supply: 230V | Max load: 16A

## WARRANTY

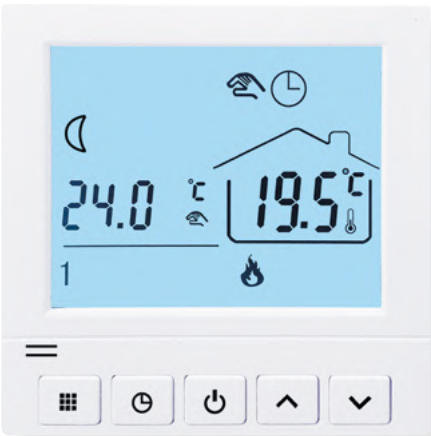
- 2 years
- Compliant with



# TS50 Thermostat

## Weekly Programmable

## Non-WiFi white



The TS50 is a budget-friendly digital thermostat with 4 adjustable time periods per day. It includes floor and room sensors and is suitable for electric or hydronic heating systems.

### TECHNICAL DATA

Color	White
Power Supply	230VAC, 50/60Hz
Current	Max 16A
Power Consumption	< 1W
Sensor Type	NTC (10kΩ)
Switching Differential	1°C
Temperature Setting Range	5°C–45°C (adjustable up to 95°C)
External Limit Range	5°C–60°C (with external sensor)
Accuracy	±1°C
Ambient Operating Conditions	-5°C to 50°C
Protection Class	IP20
Display Type	Touchscreen
Dimensions	86x86 mm glass panel
Certifications	Complies with European Directives (EMC & Safety Standards)



## FEATURES

- LCD screen with button control
- 4 periods per day | 7-day schedule
- Floor + air sensors included
- Anti-freeze mode and open window detection
- Power: 230V | Max load: 16A | IP20

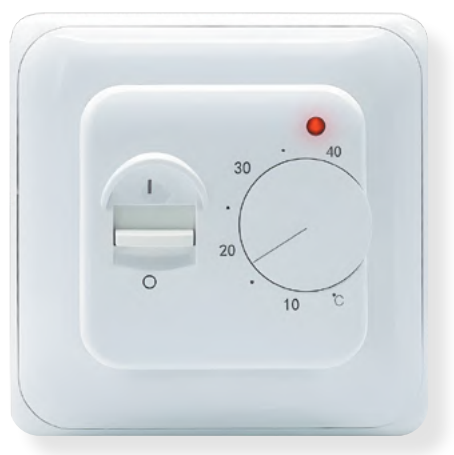
## WARRANTY

- 2 years
- Compliant with



# TS25 Thermostat

## Analog white



The TS25 is a simple and highly reliable analog thermostat, perfect for cost-effective electric heating control in residential and rental properties.

### TECHNICAL DATA

Color	White
Power Supply	AC230V(AC110V / AC24V available)
Current	16 A
Power Consumption	5 W
Temperature Setting Range	5 °C ~ 40 °C
Switching Differential	±0.5K
Ambient Temperature	- 5 °C ~ 50 °C
Sensor Type	NTC (10kΩ)
Protection Class:	IP20
Housing Material	Flame-retardant PC
Floor Sensor	Thermoplastic rubber NTC sensor, 3 m cable

## FEATURES

- Manual temperature dial (5–40°C)
- LED heating indicator
- 3m external floor sensor included
- Easy-to-install wall-mounted design
- Flame-retardant PC housing
- Power supply: 230V | Max load: 16A

## WARRANTY

- **5 years**
- Service life: 13 years
- Compliant with





# Thermostat R7C-716 WIFI

## with color LCD screen white/black



The R7C-716 is a digital colour programmable Wi-Fi touch thermostat for controlling electric underfloor heating indoors. It enables remote control of the heating system via Wi-Fi using BLE technology. The clear menu structure makes it equally easy to use.

With the R7C-716 WIFI thermostat, you can always easily and conveniently control your heating.

### TECHNICAL DATA

Color	White/Black
Delivery time	2-3 days
Connection	1 Connection
Power consumption	max 3W
Tension	230V~, 60Hz
Dimensions	86x86x48mm
IP Protection	IP 20
Temperature range	+5 to +90 °C
Ambient temperature	+0 to +45 °C
Sensor Type	NTC (10kΩ)
Manufacturer's Warranty	2 years
Mount Type	Flush installation
Temperature control range	from +5 °C to +45 °C
Color	white

## FEATURES

- Convenient and fast configuration of the Wi-Fi connection via BLE technology
- Programmable device, several time periods can be set per day.
- High quality 2.8" colour LCD screen
- Voice control via Amazon Alexa and Google Assistant

## WARRANTY

- 2 years
- Compliant with



## TEMPERATURE CONTROL MODES:

- Programme/Automatic mode
- Weekly programming with a 6-event heating schedule.
- Heating events, working days and temperature can be customised to suit personal habits.
- Manual mode: The thermostat operates on the basis of the temperature set manually, independently of the automatic mode.
- Temporary mode: The thermostat will temporarily operate at the manually set temperature and return to programme mode at the next of your events set in programme mode.



# Thermostat MCS 450

## WIFI Touch white/black



The MCS 450 programmable smart home thermostat is an intelligent and innovative touch thermostat for controlling electric underfloor heating systems. The MCS 450 offers a wide range of settings and is very easy to use.

The MCS 450 allows you to control your underfloor heating from anywhere, at any time. You have several options. You can go the classic way and make your settings directly on the thermostat, or you can use the Tuya Smart or Smart Life app. The MCS 450 also offers voice control via Amazon Alexa and Google Assistant.

Within the Tuya Smart or Smart Life app you can manage and control other smart devices. For example, you can add thermostats from other rooms or connect your smart thermostat to a window sensor (available from us) to make your underfloor heating more energy efficient. You can also add other users in your home in the app.

### TECHNICAL DATA

Color	White/Black
Delivery time	2-3 Days
Connection	1 Connection
Power consumption	1.5 W
Maximum load current	16A
Tension	230V~, 60Hz
Dimensions	86x86x14mm
IP Protection	IP 20
Temperature range	+5 to +35 °C
Ambient temperature	+0 to +45 °C
Sensor Type	NTC (10kΩ)
Manufacturer's Warranty	2 years
Protection class	II
Maximum humidity	90%



## FEATURES

- Remote control via smartphone (Tuya Smart & Smart Life)
- Voice control via Amazon Alexa and Google Assistant
- On-the-go control
- User-friendly touch display
- Customised heating
- Floor and room temperature sensors (included)
- ErP compliant according to Ecodesign Directive

## TEMPERATURE CONTROL MODES:

- Manual mode
- ECO mode
- Program mode
- Energy-saving mode at a comfortable temperature of 20°C.

For temperature control, the device has a floor sensor (included) and a room sensor (built into the device). The thermostat can be used for floor or room temperature control. Simultaneous activation of the floor and room sensors is also possible.

To install the MCS 450, you need to use the flush-mounted box supplied.

## WARRANTY

- 2 years
- Compliant with



# Thermostat MCS 450

## Touch white/black



The MCS 450 thermostat is used to control electric underfloor heating systems (heating mats, heating foils or heating cables). The thermostat maintains the desired temperature set for the floor or room and contributes to the energy-saving operation of your underfloor heating system. The MCS 450 offers a wide range of settings and is very easy to use.

### TECHNICAL DATA

Color	White/Black
Delivery time	2-3 Days
Connection	1 Connection
Power consumption	1,5 W
Maximum load current	16A
Tension	230V~, 60Hz
Dimensions	86x86x14mm
IP Protection	IP 20
Temperature range	+5 to +35 °C
Ambient temperature	+0 to +45 °C
Sensor Type	NTC (10kΩ)
Manufacturer's Warranty	2 years
Protection class	II
Maximum humidity	95%

## FEATURES

- Easy to use touch screen
- Stylish design
- Built-in air sensor and floor temperature sensor
- Activation of sensors 1, 2, 1+2
- ErP compliant according to Ecodesign Directive

## WARRANTY

- 2 years
- Compliant with



## TEMPERATURE CONTROL MODES:

- Manual mode
- ECO mode
- Programme mode: weekdays individually adjustable 5 days x 6 periods and identical 6 periods for Saturday+Sunday

The thermostat works with the temperatures and times you set.

For temperature control, the unit has a floor sensor (included) and a room sensor (built into the unit). The thermostat can be used for floor or room temperature control. Simultaneous activation of the floor and room sensor is also possible..

To install the MCS 450, you need to use the flush-mounted box supplied.



# Thermostat MCS 750

## WIFI Touch white/black



The MCS 750 is a digital, programmable WiFi touch thermostat for the control of electric floor heating indoors. It allows remote control of the heating system via Wi-Fi using the free Tuya Smart App. Programming can also be done directly on the thermostat. Thanks to the clear menu structure and touch display, the device is as easy to use as adding it to the Tuya Smart App via Bluetooth.

The touch screen requires only a light touch of the finger to activate the touch controls. For even more comfort, the advanced settings offer additional parameters that go beyond the standard settings and can be set according to the user's wishes. Weekly programming with a 4-event heating schedule allows the heating to be controlled according to the user's daily routine. The thermostat automatically regulates the heating 24/7 to the selected temperature within specified time periods (events).

### TECHNICAL DATA

Color	White/Black
Delivery time	2-3 Days
Connection	1 Connection
Power consumption	2 W
Maximum load current	16A
Tension	230V~ , 60Hz
Dimensions	86x86x48mm
IP Protection	IP 21
Temperature range	+5 to +35 °C
Ambient temperature	+0 to +45 °C
Protection class	II
Maximum humidity	60%
Sensor Type	NTC (10kΩ)
Length connection cable sensor	3 m
Weight	140 g
Supported WLAN network standards	IEEE 802.11. b/g/n 2.4 GHz
Mounting type	Flush-mounted installation



## FEATURES

- Backlit touch display
- Wlan remote control, Tuya Smart App
- Compatible with other floor temperature sensors
- Temperature control of room / floor temperature

## WARRANTY

- 2 years

## APPROVALS

Ecodesign



## TEMPERATURE CONTROL MODES:

- Manual mode
- ECO mode
- Program mode
- Energy-saving mode at a comfortable temperature of 20°C.
- Window open detection mode
- Weekly programming with a 4-event heating schedule



# Digital thermostat TP 750

## Touch white/black



The TP 750 is a digital programmable touch thermostat for the control of electric underfloor heating systems. The easy-to-read backlit display and clear menu structure make the thermostat very user-friendly with simple programming. The touch display requires only a light touch of the finger to activate the touch controls. For even more convenience, the advanced settings include additional parameters that go beyond the standard settings and can be set according to the user's requirements. Weekly programming with a 4-event heating schedule allows the heating to be controlled according to the user's daily routine. The thermostat automatically regulates the heating 24/7 to the selected temperature within specified time periods (events). The heating can be controlled by either a floor sensor (included) or a room sensor (built-in). The intelligent adaptive control of the heating start (self-learning) and the detection of open windows contribute to the energy-efficient operation of the heating system.

### TECHNICAL DATA

Color	White/Black
Delivery time	2-3 Days
Connection	1 Connection
Power consumption	2 W
Maximum load current	16A
Tension	230V~ , 60Hz
Dimensions	86x86x48mm
IP Protection	IP 21
Temperature range	+5 to +35 °C
Ambient temperature	+0 to +45 °C
Protection class	II
Maximum humidity	60%
Sensor Type	NTC (10kΩ)
Length connection cable sensor	3 m
Weight	140 g
Supported WLAN network standards	IEEE 802.11. b/g/n 2.4 GHz
Mounting type	Flush-mounted installation

## FEATURES

- Backlit touch display
- Compatible with other floor temperature sensors
- Temperature control of room / floor temperature

## WARRANTY

- 2 years

## APPROVALS

Ecodesign



## TEMPERATURE CONTROL MODES:

- Programme/Automatic mode
- Weekly programming with a 4-event heating schedule.
- Heating events, working days and temperature can be customised to suit personal habits.
- Manual mode: The thermostat operates on the basis of the temperature set manually, independently of the automatic mode.
- Temporary mode: The thermostat will temporarily operate at the manually set temperature and return to programme mode at the next of your events set in programme mode.
- Window open detection mode



# Thermostat AC3082H

## analogue



Our AC3082H analogue thermostat is the standard solution for temperature control. It is equipped with an on/off button, a temperature control dial and an LED display that shows you the current status of your heating system. This technology allows you to use your heating system according to your needs, saving energy and keeping your energy costs as low as possible.

### FEATURES

- Easy to use
- LED indicator
- On/Off button
- Temperature control dial

### TECHNICAL DATA

Color	White
Delivery time	2-3 Days
Connection	1 Connection
Power consumption	2 W
Tension	230V~, 50/60Hz
Dimensions	86x86x41mm
Sensor Type	NTC (10k $\Omega$ )
IP Protection	IP 20
Temperature range	+5 to +40 °C
Ambient temperature	-5 to +50 °C



### TEMPERATURE CONTROL MODE:

- Manual mode

### WARRANTY

- 2 years
- Compliant with



# ANTI-FREEZE PROTECTION SOLUTIONS



# PipeMate & RoofMate

## Heating Cables



At **warm-on GmbH**, we extend our expertise in electric heating to critical frost protection applications with our **PipeMate** and **RoofMate** solutions. Designed to safeguard infrastructure during harsh winters, these systems prevent freezing in pipes, roofs, and gutters—ensuring complete safety and reducing costly damage risks.





# PipeMate –

## Reliable Pipe Freeze Protection



Protect your water supply and drainage systems with PipeMate self-regulating heating cables. Suitable for both metal and plastic pipes, PipeMate ensures uninterrupted flow in cold conditions, preventing pipe bursts and freezing.

### PERFECT FOR:

- Residential & commercial plumbing
- Outdoor water systems
- Drainage & overflow protection

- **Self-Regulating Technology:**  
Adjusts heat output automatically based on ambient temperature.
- **Versatile Application:**  
Ideal for freshwater pipes, drainage, spillways, and tanks.
- **Durability Guaranteed:**  
Operates in temperatures down to  $-30^{\circ}\text{C}$ , with a max operating temp of  $85^{\circ}\text{C}$ .
- **Easy Installation:**  
Pre-assembled lengths from 2m to 30m with plug & play connection.
- **Energy Efficient:**  
Optimized performance when combined with thermal insulation.
- **Certified Safety:**  
Compliant with IEC 60800:2021, RoHS, and WEEE directives.
- **5-Year Warranty:**  
Backed by warm-on's commitment to reliability.





# RoofMate – Roof & Gutter De-Icing Solution



Combat dangerous ice dams and icicles with RoofMate heating cables, designed to maintain free-flowing gutters and protect roofs from winter damage.

## PERFECT FOR:

- Residential rooftops
- Commercial buildings
- Gutter & drainage systems in cold climates

- **High-Performance De-Icing:**  
Prevents ice build-up on eaves, valleys, gutters, and downspouts.
- **Self-Regulating Heating:**  
Delivers 20 W/m at 10°C, adjusting output as needed.
- **Robust Construction:**  
UV-resistant, weatherproof design with tinned copper braid.
- **Flexible Lengths:**  
Available from 2m to 50m for tailored installations.
- **Safe & Efficient:**  
Simple plug-in system, no need for complex wiring.
- **Year-Round Protection:**  
Designed for use on non-combustible roofs and metal structures.
- **5-Year Warranty** for peace of mind.



# WHY CHOOSE WARM-ON ANTI-FREEZE SOLUTIONS?



**30 YEARS OF EXPERTISE**  
IN ELECTRIC HEATING TECHNOLOGIES.



**CERTIFIED QUALITY:**  
FULL COMPLIANCE WITH EU SAFETY  
AND ENVIRONMENTAL STANDARDS.



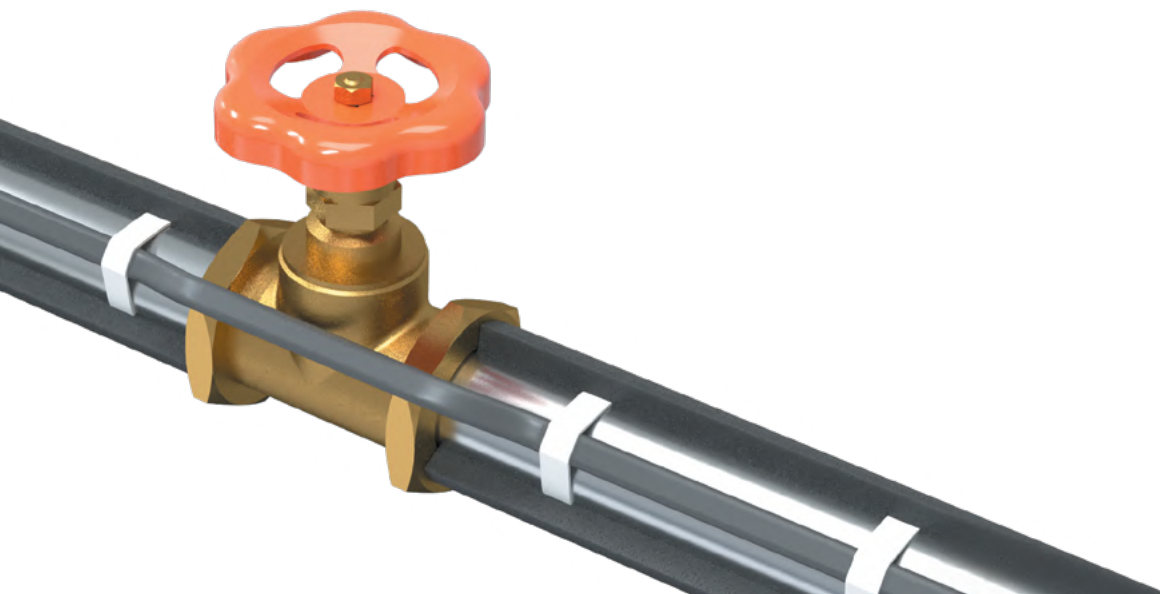
**SELF-REGULATING EFFICIENCY:**  
SMART HEATING THAT SAVES ENERGY.



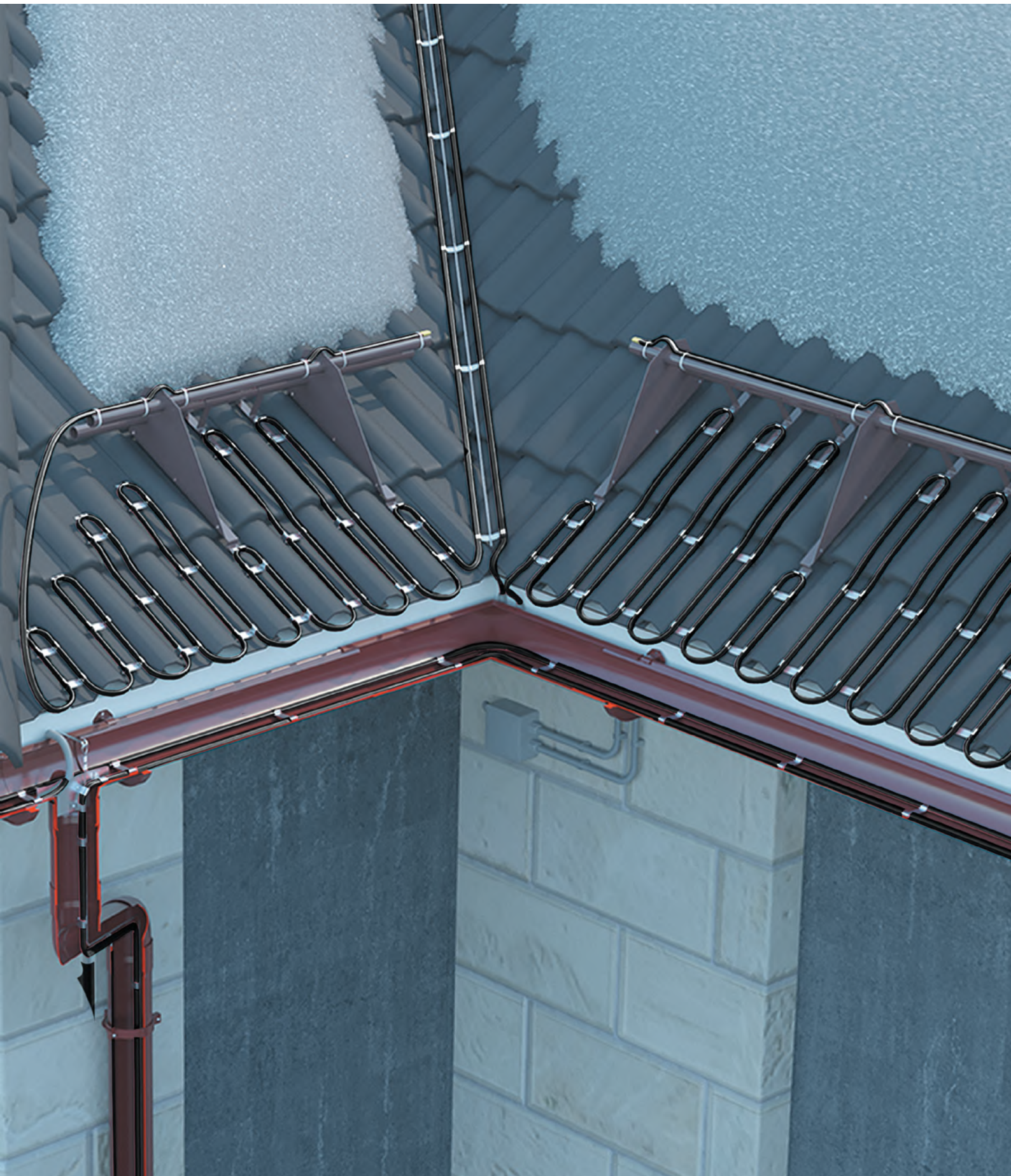
**EASY, SAFE INSTALLATION:**  
NO SPECIAL TOOLS REQUIRED.



**COMPREHENSIVE PROTECTION:**  
FROM PIPES TO ROOFTOPS, WE'VE  
GOT WINTER HAZARDS COVERED.









# WATER LEAK DETECTION & PROTECTION SYSTEMS





# Stahlmann AquaPro

## Smart Protection. Seamless Integration



**Stahlmann AquaPro** is an advanced water leak detection and prevention system that combines real-time sensing, automated shut-off, and remote management through the Tuya Smart ecosystem. Whether protecting a private home or a large industrial facility, AquaPro delivers precision, scalability, and intelligent automation to prevent costly water damage.

### SYSTEM HIGHLIGHTS

- Instant leak alerts via mobile app and sound
- Automatic water shut-off options
- Scalable design — up to 400m sensor coverage per zone
- Full compatibility with Tuya Smart / Smart Life platforms
- IP66/IP67 protection for challenging environments
- Ultra-fast detection — reacts in under 3 seconds
- Suitable for both new construction and retrofit projects

# Stahlmann AquaPro WiFi Sensor

## Standalone Smart Leak Detector



Compact and efficient, the AquaPro WiFi Sensor ensures immediate detection of leaks in critical household areas — without requiring a central hub.

### IDEAL FOR:

- Kitchens & bathrooms
- Laundry areas
- Basements
- Around boilers & water heaters

### FEATURES

- Wi-Fi 2.4GHz connectivity — manage via Tuya Smart / Smart Life app
- Leak detection in less than 3 seconds
- 80 dB adjustable alarm (High / Medium / Low / Mute)
- Battery powered (2× AAA) with low battery alerts
- Smart automation capabilities (scene linkage with other devices)
- Compact: 6.7 × 6.7 × 2.5 cm | Weight: 54g
- Operating Temp: -10°C to +55°C | Humidity: 10%–90% RH

### WARRANTY

- **2 years**
- Compatible with:  
**RED, WEEE**



### TECHNICAL DATA

Voltage	DC3V (2x1.5V AAA batteries, standard one is not include battery)
Static current	15uA
Alarm current	200MA
Low voltage reminder	≤ 2.4V
WIFI frequency	2.4GHz
Working temperature	-10 °C ~ 55 °C
Working humidity	0% to 99% RH
Sound level	80db(within 1m)

# Stahlmann Smart Wi-Fi Ball Valve



Coming Soon

Take your water leak protection to the next level with the upcoming **Stahlmann Wi-Fi Ball Valve** — enabling automatic and remote-controlled water shut-off.

## KEY FEATURES

- Wi-Fi connectivity — full control via Tuya Smart app
- Automatic shut-off triggered by leak detection
- Automatic monthly cranking to prevent valve seizing (anti-souring feature)
- Manual override for emergency situations
- Easy installation into standard residential plumbing systems
- Designed for long-term, maintenance-free operation

Coming Soon — ensuring your home stays protected, even when you're away.



# Stahlmann AquaPro System



Precision monitoring and response for critical infrastructure and commercial environments.

Coming Soon

## COMPONENTS:

- Leak Detection Tape (400m max per zone)
- AquaPro HUB — 4-zone monitoring
- Industrial Control Module — RS-485 integration — with manual override & monthly rotation

## FEATURES:

- Continuous linear detection with 0.5m accuracy
- IP66/IP67 rated for industrial resilience
- Chemical and mechanical resistance
- Seamless integration with Building Management Systems (BMS)
- Ideal for data centers, logistics hubs, mechanical rooms, and commercial facilities





# WHY CHOOSE STAHLMANN AQUAPRO?



**RAPID, PRECISE DETECTION**



**MODULAR SCALABILITY**



**SMART AUTOMATION & REMOTE CONTROL**



**30-YEAR INDUSTRIAL-GRADE DURABILITY**



**AUTOMATIC VALVE CRANKING FOR LONG-TERM RELIABILITY**

**STAHLMANN AQUAPRO —  
THE INTELLIGENT SOLUTION  
FOR MODERN WATER  
DAMAGE PREVENTION.**







**warm-on.com**

**☎ +49 09343-9809061**

Orders online: 24/7

Call-center: Mon-Fri from 9 to 17

Rastatter Str. 30  
75179 Pforzheim, Germany